

# ÉCART

---

## CALL FOR PROPOSALS | 2026-2027 PROGRAMMING

Deadline — October 31st, 2025 at 11:59pm

L'Écart invites artists, curators and collectives to submit an exhibition, residency, performance, workshop or curatorial project for its 2026-2027 programming. In accordance with its vision and values, the centre aims to promote a plurality of perspectives and experiences.

L'Écart is an artist-run centre for contemporary art that presents all disciplines in the broad field of visual arts. Located in Abitibi-Témiscamingue, in unceded Anishinaabe territory, the centre supports interdisciplinarity, new practices, experimentation, risk-taking and collaboration.

> Learn more about L'Écart's [mission and values](#).

Entries must include :

- Artistic statement (maximum 300 words)
- Project description (maximum 500 words)
- Curriculum vitae (maximum 3 pages)
- Visual documentation of 15 images in JPEG format, 72 dpi (clearly identified without accent, symbol or space, e.g.: 01.firstname.surname.jpg)
  - > For video material, copy links to video extracts (Vimeo, Youtube or other webcasters)
- Descriptive list of visual material
- Any other relevant documents (layout plan, technical requirements, CVs of collaborators, etc.).

Send your application via WeTransfer to: [info@lecart.org](mailto:info@lecart.org)

You will receive a download notification by email acknowledging the reception of your application.

> Please clearly identify yourself in the message section of WeTransfer (name + full contact details).

> Please avoid using accents, symbols or spaces when identifying your files.

## EXHIBITION PROGRAM

The exhibition program is divided into two components: LARGE ROOMS and SALOON.

> Please clearly identify in the *project description* the components for which you wish to submit your application.

### COMPONENT 1 - LARGE ROOMS

Artists are invited to present an exhibition project in one of L'Écart's large rooms. They benefit from a set-up period, as well as accommodation for those living outside the region.

Conditions :

- Exhibition fees = \$2574
- Speech during the exhibition opening = \$100
- Living expenses for out-of-town artists = \$40/day up to 7 days
- Transportation of artist and artwork round-trip = max \$1200 (bus tickets, mileage at \$0,41/km, non-specialized carrier, etc.)
- Apartment 3 ½

### COMPONENT 2 - SALOON

*For emerging artists and/or artists residing in the Abitibi-Témiscamingue region only.* Artists are invited to work on an experimental proposal in contemporary art for the small space in the display window at L'Écart.

Conditions :

- Exhibition fees = \$1000
- Speech during the exhibition opening = \$100
- For out-of-town artists — Living expenses = \$40/day up to 7 days, transportation of artist and artwork round-trip (bus tickets, mileage at \$0,41/km, non-specialized carrier, etc.) and apartment 3 ½

## RESIDENCY PROGRAM

L'Écart's residency program is divided into three sections: THE WORKS, RESEARCH and SPECIAL PROJECTS. Artists in residence benefit from a 3 ½ room apartment located above the centre, and enjoy complete autonomy of living close to the studio space.

> Please clearly identify in the project description the components for which you wish to submit your application.

#### Accommodation :

- Fully equipped kitchen
- Living room with sofa bed
- Bedroom with double bed
- A private bathroom
- Shared laundry room with coin-operated washer/dryer upstairs
- Free parking and wifi

#### COMPONENT 1 - THE WORKS (residency + exhibition)

Stays from 10 to 31 days. The artist is invited to create a new work *in situ*, to work on a new component of an exhibition already produced, to develop a collaborative project or to present an exhibition requiring a long set-up period.

#### Conditions :

- Apartment 3 ½
- Exhibition room or studio
- Residency fees = \$1500
- Exhibition fees = \$2574
- Speech during the exhibition opening = \$100
- Living expenses for out-of-town artists = \$500
- Materials = \$600 (upon presentation of invoices)
- Transportation of artist and artwork round-trip = max \$1200 (bus tickets, mileage at \$0,41/km, non-specialized carrier, etc.)

#### COMPONENT 2 - RESEARCH (no exhibition)

Stay of 10 to 14 days (or more as required). During their residency, artists and curators can devote themselves entirely to researching, exploring and writing a new project.

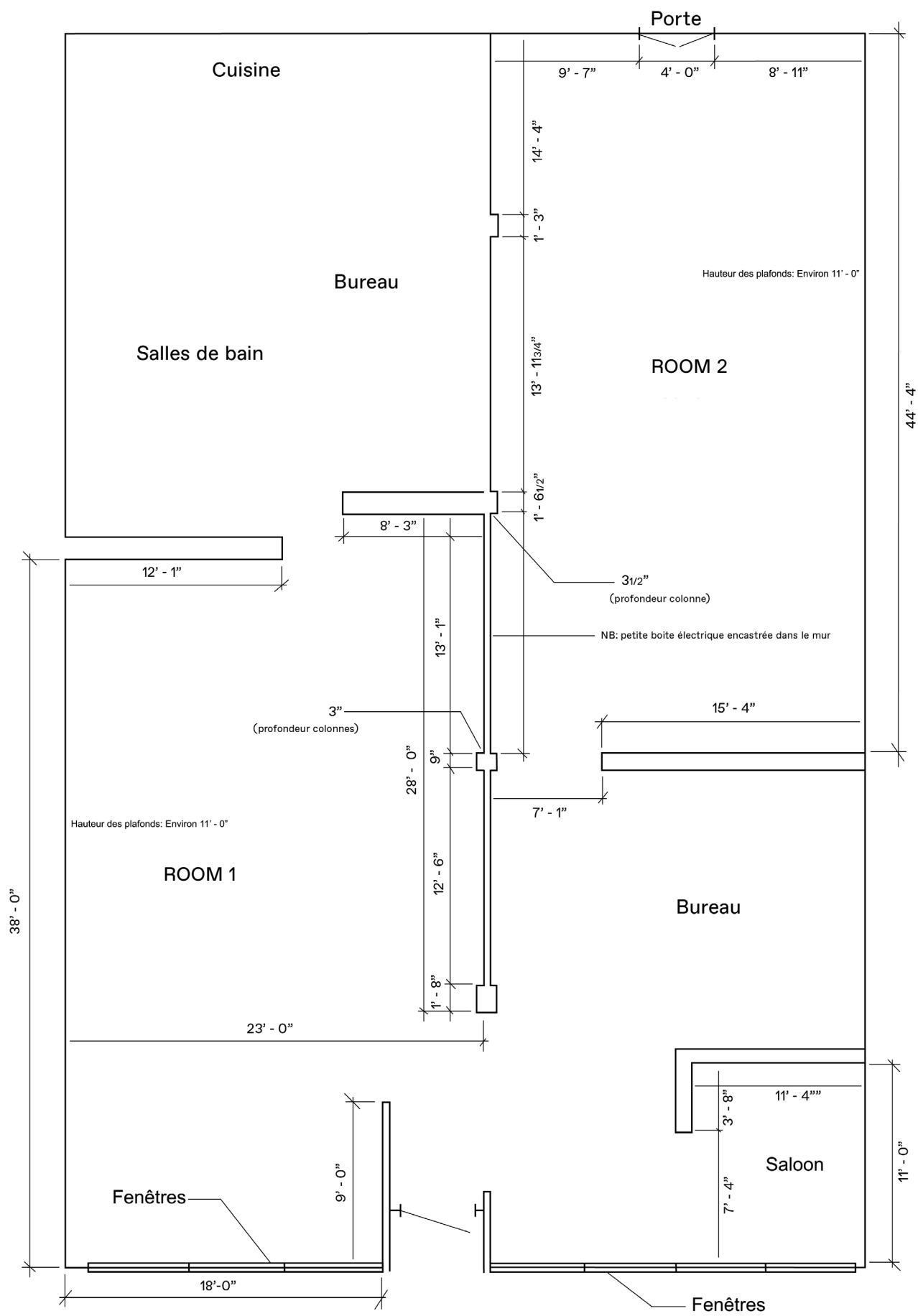
#### Conditions :

- Apartment 3 ½
- Studio space
- Residency fees = \$1500
- Living expenses for out-of-town artists = \$500
- Transportation costs = max \$500 (bus tickets, mileage at \$0,41/km, etc.)

#### COMPONENT 3 - SPECIAL PROJECTS

This call is currently closed

FLOOR PLAN



## ROOM 1



Frances Adair McKenzie, *Saison des migraines*, 2023.  
Image : Donald Trépanier

## ROOM 2



Lina Choi, *Nous continuons à couler dans un corps aqueux*, 2025. Image : Donald Trépanier

## SALOON



Laila Mestari, *Sam & Angèle*, 2022.  
Image : Donald Trépanier